



MEETING & EVENT SPACES

Kate's Mountain Lodge

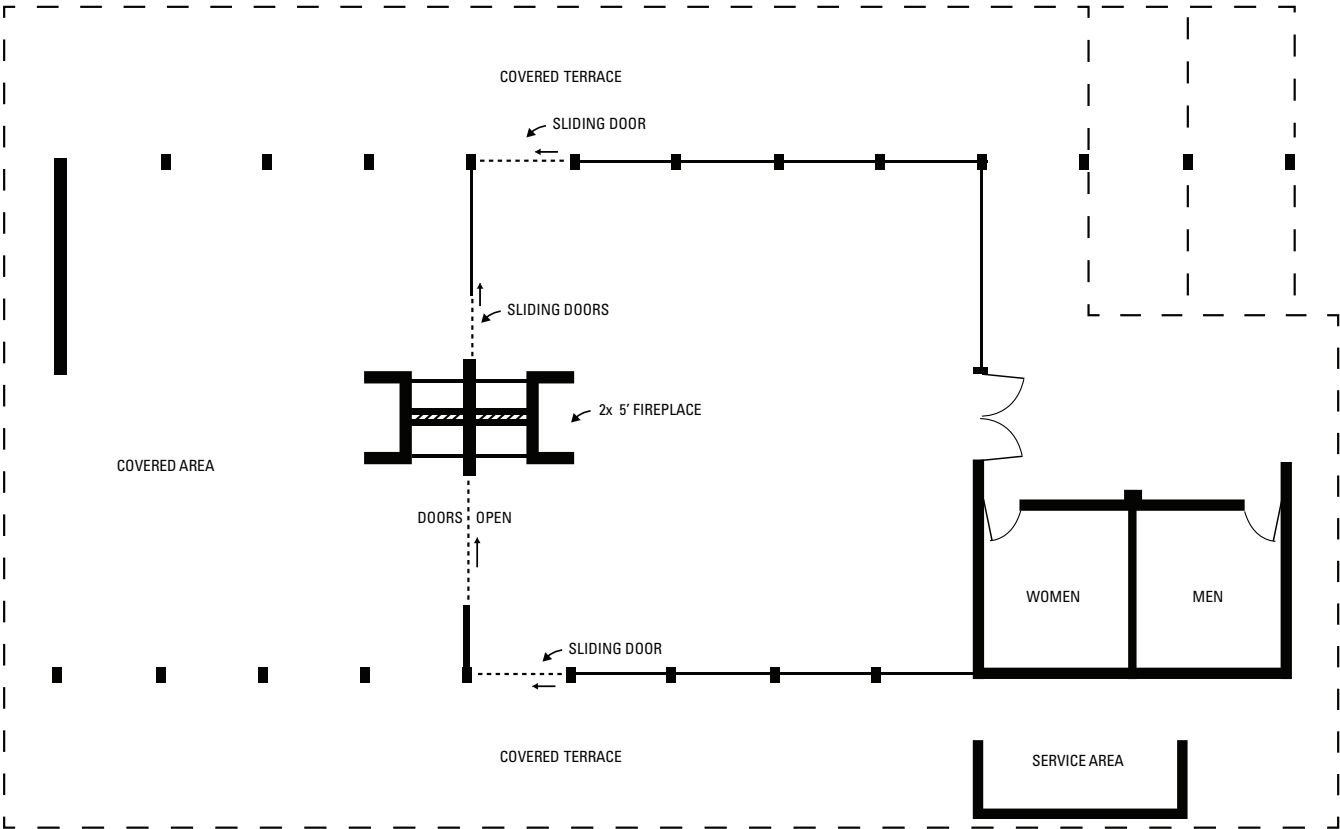
Kate's Mountain Lodge is a rustic venue surrounded by gorgeous views of the Allegheny Mountains. It is perfect for group functions and includes both indoor and outdoor entertainment options, as well as a working fireplace.

Kate's Mountain was named for Catherine "Kate" Carpenter, who in September 1756, took refuge with her child on the mountain's peak during a Native American attack, during which her husband Nicholas Carpenter was killed near Fort Dinwiddie. Kate's Mountain is the highest of the peaks in Greenbrier State Forest at 3,280 feet.



Kate's Mountain Lodge

FLOORPLAN



ROOM SPECIFICATIONS

2,883 square feet | L x W x H: 39'6" x 73' x 13'

ROOM CAPABILITIES

Type	Number of Guests
Banquet	200
Cocktail	200