



## MEETING & EVENT SPACES

# Howard's Creek Lodge

Since opening in June of 2003, Howard's Creek Lodge has been hosting events and groups alike in its unique atmosphere. This rustic, yet refined space sits along the historic Old White golf course.

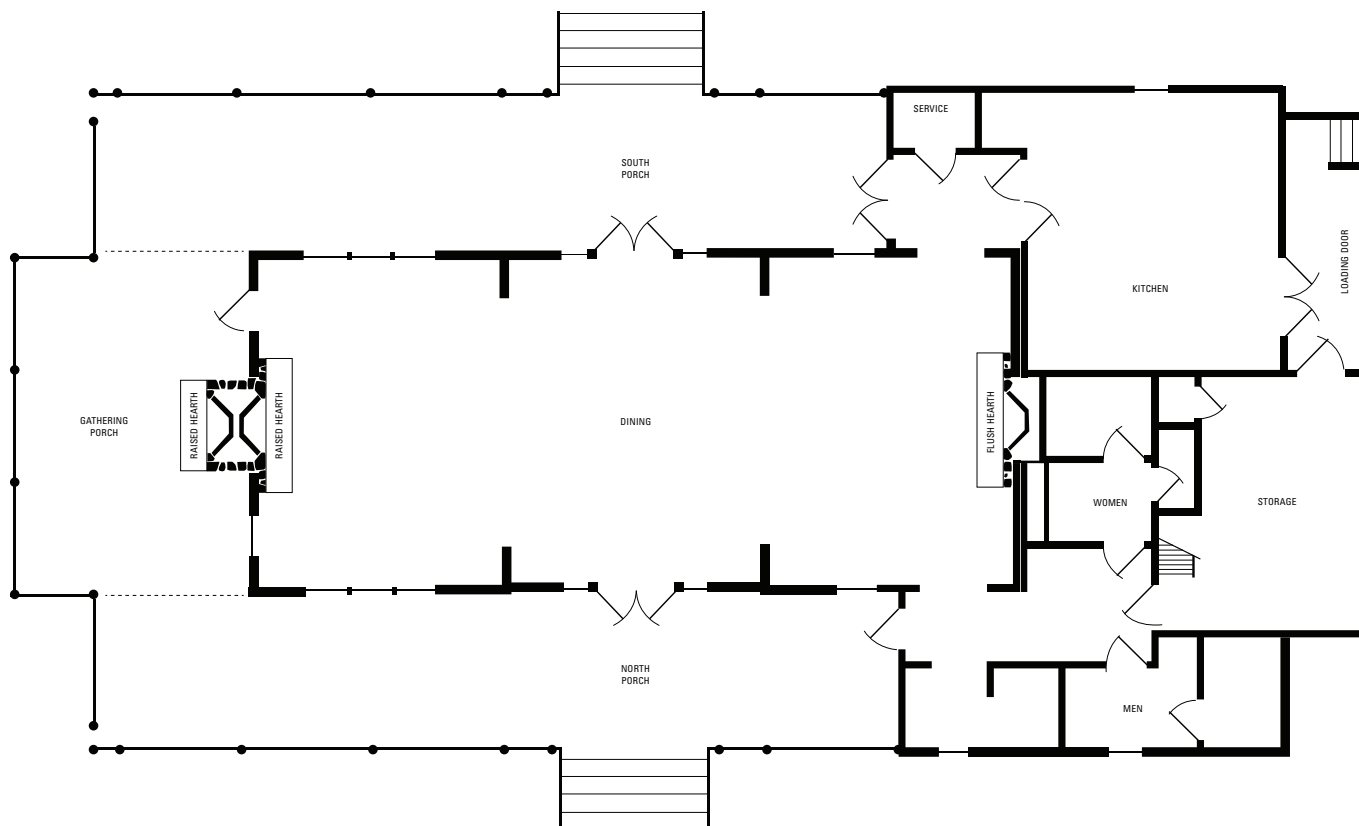
The Lodge features a white oak log structure that was originally a double-pen barn built in 1840 in nearby Monroe County. The structure also uses pine wood from the old railroad freight station in White Sulphur Springs, and chandeliers from The Greenbrier's former auditorium (today's Crystal Ballroom). The chandeliers date to 1930 and were taken down in 1953 during an expansion of The Greenbrier's conference facilities.

Howard's Creek Lodge offers the perfect venue for weddings, meetings, cocktail parties and so much more.



# Howard's Creek Lodge

## FLOORPLAN



## ROOM SPECIFICATIONS

1,568 square feet | L x W x H: 28' x 56' x 11'6"

## ROOM CAPABILITIES

Type	Number of Guests
Theater	150
Banquet	80
Conference	40
Hollow	40
Classroom	64
U-Shaped	36
Cocktail	200

