

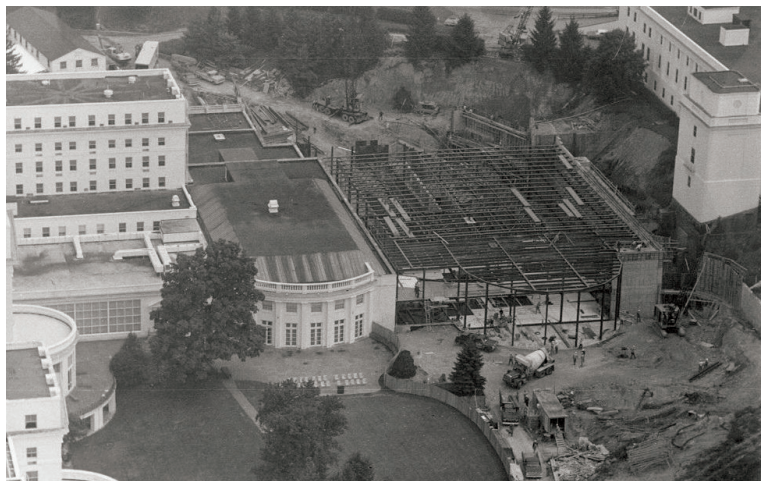


## MEETING & EVENT SPACES

# Colonial Hall

Colonial Hall is The Greenbrier's biggest ballroom and can be transformed in various configurations. The grand room is ideal for meetings, dining events and other group functions that require ample space.

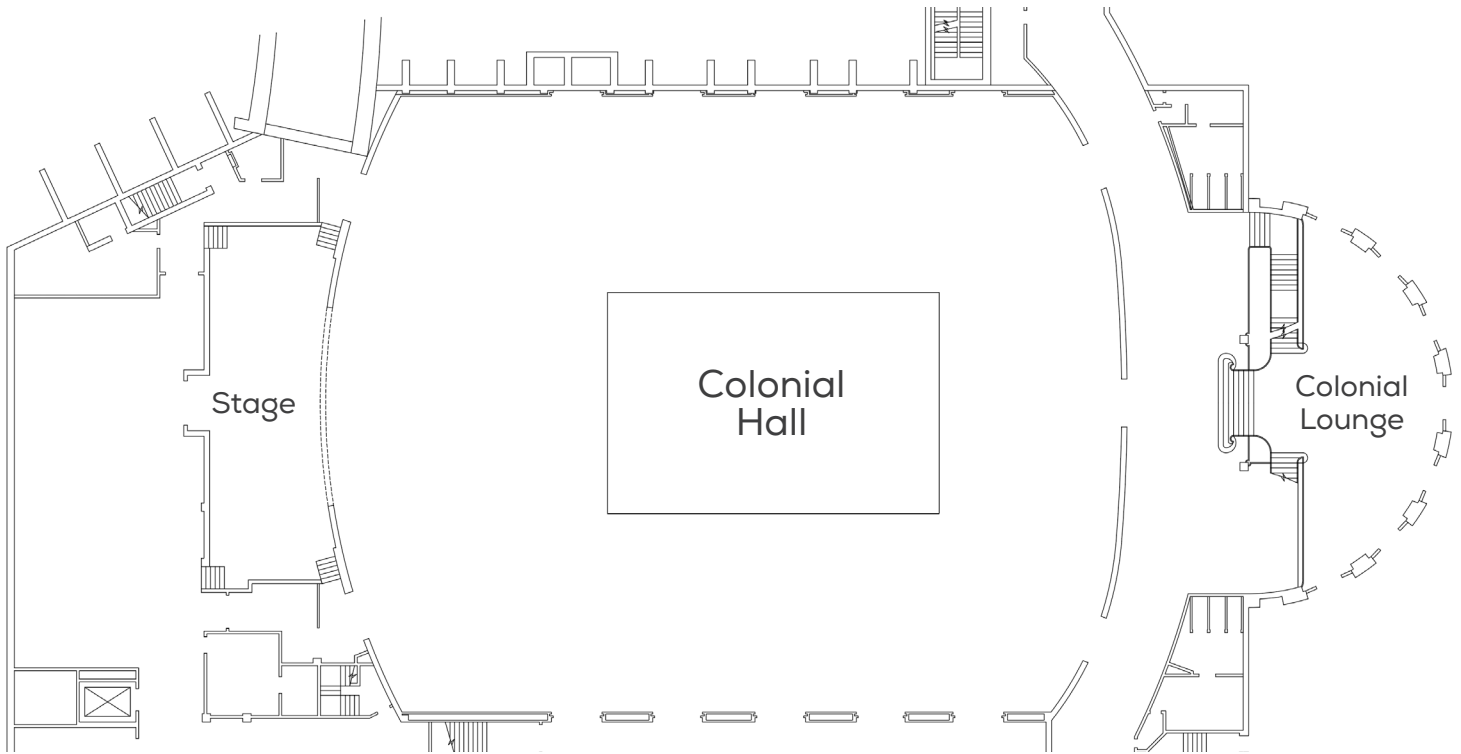
It has hosted elegant dinners, concerts such as Lionel Richie and Lady A, themed dance parties, large conventions and much more. Colonial Hall opened in 1974, giving The Greenbrier an even larger space to go along with the Crystal Room and the Chesapeake Room. It stands above the Eisenhower Rooms that were built at the same time.



*Construction of Colonial Hall - 1972-1974*



# Colonial Hall FLOORPLAN



## ROOM SPECIFICATIONS

16,128 square feet | L x W x H: 112' x 144' x 22'

## ROOM CAPABILITIES

Type	Number of Guests
Theater	1,500
Banquet	1,200
Classroom	800
Cocktail	2,000

